

Duratech Cladding

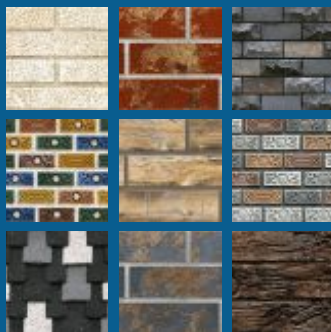


Exploring World's Best Collection

The Kajaria's collection carefully addresses the aesthetic and functional requirements of contemporary architecture by creating unique, coherent and personalised settings.

The particular size 30x45cm and the rectified edges create walls characterized by a tuning visual continuity, which makes the vibrant colors and the effect of these brilliant ceramic surfaces even more precious. The typical vibrant veins found in this resistant stone transmit a unique character to the decoration.

High Depth Cladding Tiles

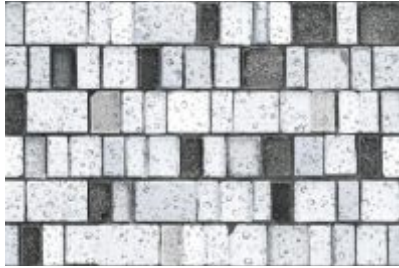


Duratech Cladding

300x450MM

High Depth Cladding Tiles

Rustic-Matt



K 34001-A



K 34002-A



K 34003-A



K 34004-B



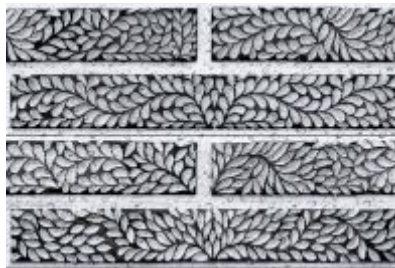
K 34005-B



K 34005-B HL



K 34006-B



K 34007-B



300x450MM



K 34008-C



K 34009-C



K 34010-C



K 34011-C



K 34012-D



K 34013-D



K 34014-D



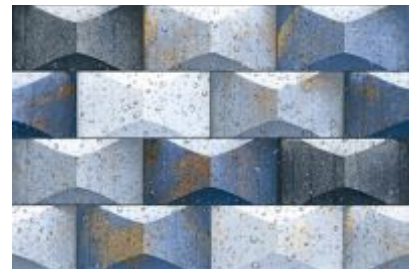
K 34015-D



K 34016-E



K 34017-E



K 34018-F

Duratech Cladding

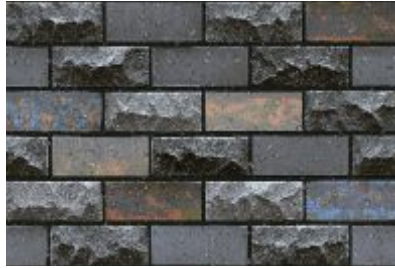
300x450MM

High Depth Cladding Tiles

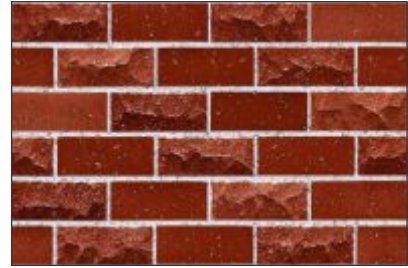
Rustic-Matt



K 34019-G



K 34020-G



K 34021-G



K 34022-H



K 34023-H



K 34024-H



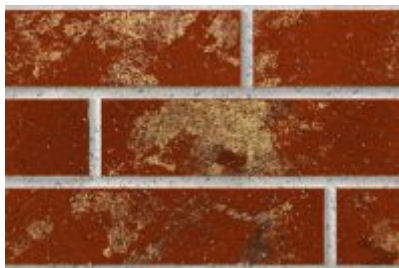
K 34025-I



K 34026-I



K 34027-I



K 34028-I



K 34029-J



K 34030-J



K 34031-J

Kajaria



Duratech Cladding

High Depth Cladding Tiles

Rustic-Matt

300x450MM



K 34032-K



K 34033-K



K 34034-K



K 34035-L



K 34036-L



K 34037-M



K 34038-M



K 34039-M





K 34040-N



K 34041-N



K 34042-N



K 34043-O



K 34044-O



K 34045-P



K 34045-P HL



K 34046-P



K 34047-P



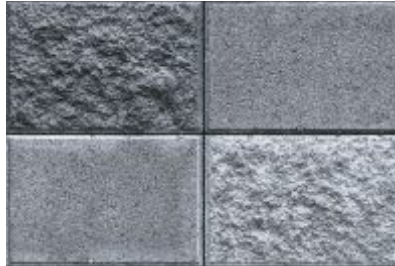
K 34048-P

Kajaria

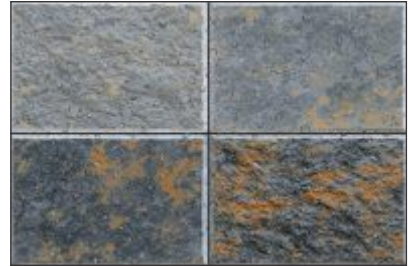




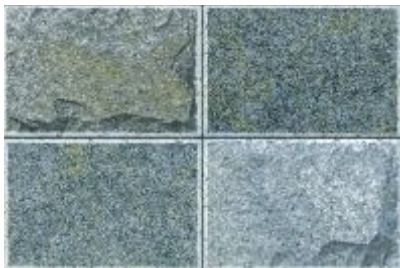
K 34049-Q



K 34050-Q



K 34051-Q



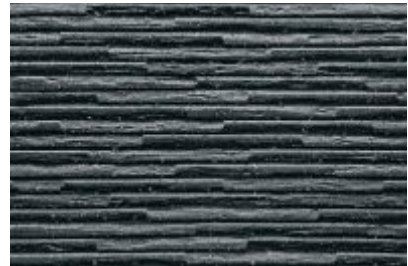
K 34052-Q



K 34053-R



K 34054-R



K 34055-R



K 34056-S



K 34057-S



K 34058-S



K 34059-T



K 34060-T



K 34061-T



TECHNICAL SPECIFICATION 300x600MM / 12MM DURATECH

S.No.	PROPERTY	GROUP BIA - ISO 13006/EN-176	GROUP BIA IS :15622:2017	OUR VALUE	TEST ACCORDING TO
Dimensions & surface Quality					
1.	Deviation in length and width	± 0.6%	± 0.1%	± 0.1%	ISO 10545:2/IS:13630 (P-1)
2.	Deviation in thickness	± 5%	± 5%	± 4%	ISO 10545:2/IS:13630 (P-1)
3.	Deviation in Staightness of sides	± 0.5%	± 0.1%	± 0.1%	ISO 10545:2/IS:13630 (P-1)
4.	Deviation in Rectangularity	± 0.5%	± 0.1%	± 0.1%	ISO 10545:2/IS:13630 (P-1)
5.	Deviation in Surface Flatness	± 0.5%	± 0.5%	± 0.2%	ISO 10545:2/IS:13630 (P-1)
6.	Surface Quality (%)	Minimum 95%	Minimum 95%	No visible defects	ISO 10545:2/IS:13630 (P-1)
Physical characteristics					
7.	Scratch Hardness of surface Moh's scale	Required	Min. 5	7	EN-101/IS:13630 (P-13)
8.	Water absorption	≤0.5%	Averages 0.08, Individual maximum 0.1%	<0.1%	ISO 10545:3/IS: 13630 (P-2)
9.	Moisture Expansion, in mm/m	Nil	0.02, Max	Nil	ISO 10545:10
10.	SurfaceAbrasion Resistance	As per Mfg.	Min Class 2	Min. Class-4	ISO 10545:7
Mechanical characteristics					
11.	Breaking strength	1300 N	Min 1300 N	>2200N	ISO 10545:4/IS: 13630 (P-6)
12.	Modulus of rupture	>35 N/mm ²	Average 35, Individual minimum 32	≥40 N/mm ²	ISO 10545:4/IS: 13630 (P-6)
13.	Impact resistance	Declared by manufacturer	0.55, Min	Min. 0.55	ISO 10545:5/IS:13630 (P-14)
Safety characteristics					
14.	Density	Required	Min 2.20 gm/cc	2.30 gm/cc	DIN 51082/IS: 13630 (P-2)
15.	Skid resistance (Friction coefficient)	≥0.4	-	≥0.5	ISO 10545:17
Thermo photo characteristics					
16.	Thermal shock resistance	Resistant to 10 cycles	Min 10 cycles	Pass min 10 cycles	ISO 10545:9/IS: 13630 (P-5)
17.	Co efficient of thermal expansion	9×10 ⁻⁶ K ⁻¹ Max	6×10 ⁻⁶ K ⁻¹ Max	<6×10 ⁻⁶ K ⁻¹ Max	ISO 10545:8/IS:13630 (P-4)
18.	Frost resistance	Resistant	Required	Resistant	ISO 10545:12/IS: 13630 (P-10)
19.	Crazing Resistance	As per Mfg.	-	Min 10 cycles	ISO 10545:11
Chemical characteristics characteristics					
20.	Stain Resistance	Min class-3	Required	Min conform to class-4'	ISO 10545:14
21.	Chemical Resistance HOUSE HOLD CHEMICAL & SWIMMING POOL SALT	min class-UB	Required	Conform to classes-UA'	ISO 10545:13/IS:13630 (P-7)
22.	Chemical Resistance LOW CONCENTRATIONS ACID & ALKALIES	min class-ULB	Required	Conform to classes-U LA'	ISO 10545:13/IS:13630 (P-7)
23.	Chemical Resistance HIGH CONCENTRATIONS ACID & ALKALIES	min class-UHB	Required	Conform to classes-UHA'	ISO 10545:13/IS:13630 (P-7)

PACKING DETAILS

DIMENSIONS (MM)	NO. OF TILES / BOX	COVERAGE AREA
300x600	4 Pcs.	0.72 sqm.

* Vitrified tiles have resistance to most of the stains/chemicals but, it is recommended to take due care while laying and for day-to-day maintenance.

* Resistance to acids & alkalis (Exception Hydrofluoric Acids & its Compounds)



TECHNICAL SPECIFICATION DURATECH 300X450MM | 10MM (HIGH DEPTH CLADDING TILES)

S.No.	CHARACTERISTIC	GROUP BIB : ISO 13006 - 2018	GROUP BIB IS :15622:2017	KAJARIA VITRO VALUE	TEST ACCORDING TO
Dimensions & surface Quality					
1.	Deviation in length and width	± 0.3%	± 0.1%	± 0.1%	ISO 10545:2/IS:13630 (P-1)
2.	Deviation in thickness	± 5%	± 5%	± 4%	ISO 10545:2/IS:13630 (P-1)
3.	Deviation in Straightness of sides	± 0.3%	± 0.1%	± 0.1%	ISO 10545:2/IS:13630 (P-1)
4.	Deviation in Rectangularity	± 0.3%	± 0.1%	± 0.1%	ISO 10545:2/IS:13630 (P-1)
5.	Deviation in Surface Flatness	± 0.4%	± 0.50%	± 0.3%	ISO 10545:2/IS:13630 (P-1)
6.	Surface Quality (%)	Minimum 95%	Minimum 95%	No visible defects	ISO 10545:2/IS:13630 (P-1)
7.	Glossiness with Nano	Declared by manufacturer		Avg. 5	ISO 2813 (Glossy meter)
Physical characteristics					
8.	Scratch Hardness of surface Moh's scale	Required	Min. 5	Min. 6	IS:13630 (P-13)
9.	Water absorption	0.5% < E ≤ 3% Individual maximum 33%	Avg 0.08% < E ≤ 3% Individual maximum 33%	Avg 1%	ISO 10545:3/IS: 13630 (P-2)
10.	Moisture Expansion	Test method available	Max 0.02 mm/m	Max 0.01 mm/m	ISO 10545:10 / IS:13630(P-3)
11.	Surface abrasion	Required	Min Class - 2	PASS : CLASS - 4	ISO 10545:7/IS:13630 (P-11)
Mechanical characteristics					
12.	Breaking strength	> 1100 N	Min 1100 N	≥ 1500 N	ISO 10545:4/IS: 13630 (P-6)
13.	Modulus of rupture	>30 N/mm ²	Average 30,Individual minimum 27N	≥ 38 N/mm ²	ISO 10545:4/IS: 13630 (P-6)
Safety characteristics					
14.	Impact resistance (Coefficient of restitution)	Test method available	Min 0.55	> 0.55	ISO 10545:5/IS: 13630 (P-14)
Thermo photo characteristics					
15.	Thermal shock resistance	Test method available	Min 10 cycles	Pass min 10 cycles	ISO 10545:9/IS: 13630 (P-5)
16.	Co efficient of thermal expansion	Test method available	7×10 ⁻⁶ Max	<6×10 ⁻⁶	ISO 10545:8/IS:13630 (P-4)
17.	Crazing Resistance	Required	4 Cycle Pass	PASS : 5 cycle	ISO 10545:11/IS:13630 (P-9)
18.	Frost resistance	Required	Required	No Damage	ISO 10545:12/IS: 13630 (P-10)
19.	Small colour differences	Plain coloured tiles only where required ΔEcmc < 0.75	-	No differences	ISO 10545:16
Chemical characteristics characteristics					
20.	Stain Resistance	Min Class - 3	Min class - 1	Min conform to class-4'	ISO 10545:14/IS:13630 (P-8)
21.	Chemical Resistance HOUSE HOLD CHEMICAL & SWIMMING POOL SALT	Min class-GB	Class - AA	Conform to classes-GA'	ISO 10545:13/IS:13630 (P-8)
22.	Chemical Resistance LOW CONCENTRATIONS ACID & ALKALIES	Manufacturer is to state classification	Required	Conform to classes-GLA'	ISO 10545:13/IS:13630 (P-8)
23.	Chemical Resistance HIGH CONCENTRATIONS ACID & ALKALIES	Test method available	Required	Conform to classes-GHB'	ISO 10545:13/IS:13630 (P-8)

PACKING DETAILS

DIMENSIONS & THICKNESS (MM)	NO.OF TILES / BOX	SURFACE	COVERAGE AREA	BOX WEIGHT
300x450mm 10mm	5 Pcs.	Matt	0.675 sqm	12.5 kg (Avg)

* KAJARIA DURATECH CLADDING TILES have resistance to most of the stains/chemicals but it is recommended to take due care while laying and for day-to-day maintenance.

* Resistance to acids & alkalis (Exception Hydrofluoric acids & its Compounds)

* Colours in the catalogue are as accurate as printing process allows. Please check actual sample before making the final selection

* Sizes mentioned in the catalogue are nominal sizes only.

* No claim will be entertained once the KAJARIA DURATECH CLADDING TILES are fixed.

* For better laying, Please follow the instructions on the packaging box.

* Please make sure to check the shade/finish with the sales agent/ dealer making the final purchase because there might be variation in actual finish that shown in the catalogue. The company will not bear any loss in such case.



12mm
ULTRATHICK OUTDOOR VITRIFIED TILES

TECHNICAL SPECIFICATION 600x600MM | 400x400MM / 12MM DURATECH

S.No.	PROPERTY	GROUP BIA - ISO 13006/EN-176	GROUP BIA IS :15622:2017	OUR VALUE	TEST ACCORDING TO
Dimensions & surface Quality					
1.	Deviation in length and width	± 0.6%	± 0.1%	± 0.1%	ISO 10545:2/IS:13630 (P-1)
2.	Deviation in thickness	± 5%	± 5%	± 4%	ISO 10545:2/IS:13630 (P-1)
3.	Deviation in Straightness of sides	± 0.5%	± 0.1%	± 0.1%	ISO 10545:2/IS:13630 (P-1)
4.	Deviation in Rectangularity	± 0.5%	± 0.1%	± 0.1%	ISO 10545:2/IS:13630 (P-1)
5.	Deviation in Surface Flatness	± 0.5%	± 0.5%	± 0.2%	ISO 10545:2/IS:13630 (P-1)
6.	Surface Quality (%)	Minimum 95%	Minimum 95%	No visible defects	ISO 10545:2/IS:13630 (P-1)
Physical characteristics					
7.	Scratch Hardness of surface Moh's scale	Required	Min. 5	6	EN-101/IS:13630 (P-13)
8.	Water absorption	≤0.5%	Averages 0.08, Individual maximum 0.1%	<0.1%	ISO 10545:3/IS: 13630 (P-2)
9.	Moisture Expansion, in mm/m	Nil	0.02, Max	Nil	ISO 10545:10
10.	SurfaceAbrasion Resistance	As per Mfg.	Min Class 2	Min. Class-4	ISO 10545:7
Mechanical characteristics					
11.	Breaking strength	1300 N	Min 1300 N	>3000N	ISO 10545:4/IS: 13630 (P-6)
12.	Modulus of rupture	>35 N/mm ²	Average 35, Individual minimum 32	≥40 N/mm ²	ISO 10545:4/IS: 13630 (P-6)
13.	Impact resistance	Declared by manufacturer	0.55, Min	Min. 0.55	ISO 10545:5/IS:13630 (P-14)
Safety characteristics					
14.	Density	Required	Min 2.20 gm/cc	2.30 gm/cc	DIN 51082/IS: 13630 (P-2)
15.	Skid resistance (Friction coefficient)	≥0.4	-	≥0.5	ISO 10545:17
Thermo photo characteristics					
16.	Thermal shock resistance	Resistant to 10 cycles	Min 10 cycles	Pass min 10 cycles	ISO 10545:9/IS: 13630 (P-5)
17.	Co efficient of thermal expansion	9×10 ⁻⁶ K ⁻¹ Max	6×10 ⁻⁶ K ⁻¹ Max	<6×10 ⁻⁶ K ⁻¹ Max	ISO 10545:8/IS:13630 (P-4)
18.	Frost resistance	Resistant	Required	Resistant	ISO 10545:12/IS: 13630 (P-10)
19.	Crazing Resistance	As per Mfg.	-	Min 10 cycles	ISO 10545:11
Chemical characteristics characteristics					
20.	Stain Resistance	Min class-3	Required	Min conform to class-4'	ISO 10545:14
21.	Chemical Resistance HOUSE HOLD CHEMICAL & SWIMMING POOL SALT	min class-UB	Required	Conform to classes-UA'	ISO 10545:13/IS:13630 (P-7)
22.	Chemical Resistance LOW CONCENTRATIONS ACID & ALKALIES	min class-ULB	Required	Conform to classes-ULA'	ISO 10545:13/IS:13630 (P-7)
23.	Chemical Resistance HIGH CONCENTRATIONS ACID & ALKALIES	min class-UHB	Required	Conform to classes-UHA'	ISO 10545:13/IS:13630 (P-7)

PACKING DETAILS

DIMENSIONS (MM)	NO. OF TILES / BOX	COVERAGE AREA
600x600	3 Pcs.	1.08 sqm.
400x400	5 Pcs.	0.80 sqm.

* Vitrified tiles have resistance to most of the stains/chemicals but, it is recommended to take due care while laying and for day-to-day maintenance.

* Resistance to acids & alkalis (Exception Hydrofluoric Acids & its Compounds)



Technical Specification POLISHED VITRIFIED TILES (1000x1000 Solitaire Plus)

S. No.	PROPERTY	GROUP BIA ISO 13006/EN-176	GROUP BIA IS :15622:2017	KAJARIA VITRO VALUE	TEST ACCORDING TO
Dimensions & surface Quality					
1.	Deviation in length and width	± 0.6%	± 0.1%	± 0.1%	ISO 10545:2/IS:13630 (P-1)
2.	Deviation in thickness	± 5%	± 5%	± 4%	ISO 10545:2/IS:13630 (P-1)
3.	Deviation in Straightness of sides	± 0.5%	± 0.1%	± 0.1%	ISO 10545:2/IS:13630 (P-1)
4.	Deviation in Rectangularity	± 0.5%	± 0.1%	± 0.1%	ISO 10545:2/IS:13630 (P-1)
5.	Deviation in Surface Flatness	± 0.5%	± 0.5%	± 0.2%	ISO 10545:2/IS:13630 (P-1)
6.	Surface Quality (%)	Minimum 95%	Minimum 95%	No visible defects	ISO 10545:2/IS:13630 (P-1)
7.	Glossiness with Nano	Declared by manufacturer	-	Minimum 90	ISO 2813 (Glossy meter)
Physical characteristics					
8.	Scratch Hardness of surface Moh's scale	Required	Min. 5	Min. 5	EN-101/IS:13630 (P-13)
9.	Water absorption	≤ 0.5%	Averages 0.08, Individual maximum 0.1%	<0.5%	ISO 10545:3/IS: 13630 (P-2)
10.	Moisture Expansion	Nil	0.02, Max	Nil	ISO 10545:10
11.	Deep Abrasion	max 175 mm ³	Max 140 mm ³	≤ 140mm ³	ISO 10545:6/IS:13630 (P-12)
Mechanical characteristics					
12.	Breaking strength	1300 N	Min 1300 N	≥ 3000 N	ISO 10545:4/IS: 13630 (P-6)
13.	Modulus of rupture	>35 N/mm ²	Average 35, Individual minimum 32	≥ 40 N/mm ²	ISO 10545:4/IS: 13630 (P-6)
Safety characteristics					
14.	Density	Required	Min 2.20 gm/cc	2.34 gm/cc	DIN 51082/IS: 13630 (P-2)
15.	Skid resistance (Friction coefficient)	≥ 0.4	-	≥ 0.4	ISO 10545:17
Thermo photo characteristics					
16.	Thermal shock resistance	Resistant to 10 cycles	Min 10 cycles	Pass min 10 cycles	ISO 10545:9/IS: 13630 (P-5)
17.	Co efficient of thermal expansion	9×10 ⁻⁶ /K ⁻¹ Max	6×10 ⁻⁶ /K ⁻¹ Max	<6×10 ⁻⁶ /K ⁻¹ Max	ISO 10545:8/IS:13630 (P-4)
18.	Frost resistance	Resistant	Required	Resistant	ISO 10545:12/IS: 13630 (P-10)
19.	Color Resistance to UV light	Resistant	-	Resistant	DIN 51094
Chemical characteristics charactersitics					
20.	Stain Resistance	Min class-3	Required	Min conform to class-4*	ISO 10545:14
21.	Chemical Resistance HOUSE HOLD CHEMICAL & SWIMMING POOL SALT	Min class-UB	Required	Conform to classes-UA*	ISO 10545:13/IS:13630 (P-7)
22.	Chemical Resistance LOW CONCENTRATIONS ACID & ALKALIES	Min class-ULB	Required	Conform to classes-ULA*	ISO 10545:13/IS:13630 (P-7)
23.	Chemical Resistance HIGH CONCENTRATIONS ACID & ALKALIES	Min class-UHB	Required	Conform to classes-UHA*	ISO 10545:13/IS:13630 (P-7)

TECHNICAL SPECIFICATION - POLISHED VITRIFIED TILES

S. No.	Property	Group B1a - ISO 13006 / EN - 176	Group B1a IS :15622 : 2017	Our Value	Test According to
Dimensions & surface Quality					
1.	Deviation in length and width	± 0.6%	± 0.1%	± 0.1%	ISO 10545:2/IS:13630 (P-1)
2.	Deviation in thickness	± 5%	± 5%	± 4%	ISO 10545:2/IS:13630 (P-1)
3.	Deviation in Straightness of sides	± 0.5%	± 0.1%	± 0.1%	ISO 10545:2/IS:13630 (P-1)
4.	Deviation in Rectangularity	± 0.5%	± 0.1%	± 0.1%	ISO 10545:2/IS:13630 (P-1)
5.	Deviation in Surface Flatness	± 0.5%	± 0.5%	± 0.2%	ISO 10545:2/IS:13630 (P-1)
6.	Surface Quality (%)	Minimum 95%	Minimum 95%	No visible defects	ISO 10545:2/IS:13630 (P-1)
7.	Glossiness with Nano	Declared by manufacturer	-	Minimum 90%	ISO 2813 (Glossy meter)
Physical characteristics					
8.	Scratch Hardness of surface Moh's scale	Required	Min. 5	Min. 6	EN-101/IS:13630 (P-13)
9.	Water absorption	≤0.5%	Averages 0.08, Individual Maximum, 0.1%	≤0.05%	ISO 10545:3/IS:13630 (P-2)
10.	Moisture Expansion	Nil	0.02, Max	Nil	ISO 10545:10
11.	Deep Abrasion	max 175 mm ²	max 140 mm ²	≤ 140mm ²	ISO 10545:6/IS:13630 (P-12)
Mechanical characteristics					
12.	Breaking strength	1300 N	Min 1300N	≥1700N	ISO 10545:4/IS:13630 (P-6)
13.	Modulus of rupture	≥35 N/mm ²	Averages 35 Individual Minimum 32	≥35 N/mm ²	ISO 10545:4/IS:13630 (P-6)
Safety characteristics					
14.	Density	Required	Min 2.20 gm/cc	2.34 gm/cc	DIN 51082/IS:13630 (P-2)
15.	Skid resistance (Friction Co efficient)	≥0.4	-	≥0.4	ISO 10545:17
Thermo photo characteristics					
16.	Thermal shock resistance	Resistant to 10 cycles	Min 10 Cycles	Pass min 10 cycles	ISO 10545:9/IS:13630 (P-5)
17.	Coefficient of thermal expansion	9×10 ⁻⁶ °K ⁻¹ Max	6×10 ⁻⁶ °K ⁻¹ Max	<6×10 ⁻⁶ °K ⁻¹ Max	ISO 10545:8/IS:13630 (P-4)
18.	Frost resistance	Resistant	Required	Need to comply with the standard	ISO 10545:12/IS:13630 (P-10)
19.	Color Resistance to UV light	Resistant	-	Resistant	DIN 51094
Chemical characteristics characteristics					
20.	Stain Resistance	Min class-3	Required	Min conform to class-4	ISO 10545:14
21.	Chemical Resistance HOUSE HOLD CHEMICAL & SWIMMING POOL SALT	min class-UB	Required	Conform to classes-UA	ISO 10545:13/IS:13630 (P-7)
22.	Chemical Resistance LOW CONCENTRATIONS ACID & ALKALIES	min class-ULB	Required	Conform to classes-U LA	ISO 10545:13/IS:13630 (P-7)
23.	Chemical Resistance HIGH CONCENTRATIONS ACID & ALKALIES	min class-ULB	Required	Conform to classes-UHA	ISO 10545:13/IS:13630 (P-7)

TECHNICAL SPECIFICATION - STONE ART

S. No.	Property	Group B1a - ISO 13006/EN-176	Group B1a IS :15622:2017	Our Value	Test According to
Dimensions & surface Quality					
1.	Deviation in length and width	± 0.6%	± 0.1%	± 0.1%	ISO 10545:2/IS:13630 (P-1)
2.	Deviation in thickness	± 5%	± 5%	± 4%	ISO 10545:2/IS:13630 (P-1)
3.	Deviation in Straightness of sides	± 0.5%	± 0.1%	± 0.1%	ISO 10545:2/IS:13630 (P-1)
4.	Deviation in Rectangularity	± 0.5%	± 0.1%	± 0.1%	ISO 10545:2/IS:13630 (P-1)
5.	Deviation in Surface Flatness	± 0.5%	± 0.5%	± 0.2%	ISO 10545:2/IS:13630 (P-1)
6.	Surface Quality (%)	Minimum 95%	Minimum 95%	No visible defects	ISO 10545:2/IS:13630 (P-1)
Physical characteristics					
7.	Scratch Hardness of surface Moh's scale	Required	Min. 5	Min. 6	EN-101/IS:13630 (P-13)
8.	Water absorption	≤0.5%	Averages 0.08, Individual maximum, 0.1%	≤0.05%	ISO 10545:3/IS:13630 (P-2)
9.	Moisture Expansion, in mm/m	Nil	0.02, Max	Nil	ISO 10545:10
10.	Deep Abrasion	max 175 mm ²	Max 140mm ²	≤ 140mm ²	ISO 10545:6/IS:13630 (P-12)
Mechanical characteristics					
11.	Breaking strength	1300 N	Min 1300 N	>2000N	ISO 10545:4/IS:13630 (P-6)
12.	Modulus of rupture	≥35 N/mm ²	Average 35, Individual minimum 32	≥40 N/mm ²	ISO 10545:4/IS:13630 (P-6)
Safety characteristics					
13.	Density	Required	2.20 gm/cc	2.34 gm/cc	DIN 51082/IS:13630 (P-2)
14.	Skid resistance (Friction coefficient)	≥0.4	-	>0.4	ISO 10545:17
Thermo photo characteristics					
15.	Thermal shock resistance	Resistant to 10 cycles	Pass min 10 cycles	Pass min 10 cycles	ISO 10545:9/IS:13630 (P-5)
16.	Co efficient of thermal expansion	9×10 ⁻⁶ °K ⁻¹ Max	<6×10 ⁻⁶ °K ⁻¹ Max	<6×10 ⁻⁶ °K ⁻¹ Max	ISO 10545:8/IS:13630 (P-4)
17.	Frost resistance	Resistant	Required	Resistant	ISO 10545:12/IS:13630 (P-10)
18.	Color Resistance to UV light	Resistant	-	Resistant	DIN 51094
Chemical characteristics characteristics					
19.	Stain Resistance	Min Class 3	Required	Min conform to class 4	ISO 10545:14
20.	Chemical Resistance HOUSE HOLD CHEMICAL & SWIMMING POOL SALT	min class-UB	Required	Conform to classes-UA	ISO 10545:13/IS:13630 (P-7)
21.	Chemical Resistance LOW CONCENTRATIONS ACID & ALKALIES	min class-ULB	Required	Conform to classes-U LA	ISO 10545:13/IS:13630 (P-7)
22.	Chemical Resistance HIGH CONCENTRATIONS ACID & ALKALIES	min class-ULB	Required	Conform to classes-UHA	ISO 10545:13/IS:13630 (P-7)

TECHNICAL SPECIFICATION - FULL BODY VITRIFIED TILES

S. No.	Property	Group Bla - ISO 13006/EN-176	Group Bla IS : 15622:2017	Our Value	Test According to
Dimensions & surface Quality					
1.	Deviation in length and width	± 0.6%	± 0.1%	± 0.1%	ISO 10545:2/IS:13630 (P-1)
2.	Deviation in thickness	± 5%	± 5%	± 4%	ISO 10545:2/IS:13630 (P-1)
3.	Deviation in Straightness of sides	± 0.5%	± 0.1%	± 0.1%	ISO 10545:2/IS:13630 (P-1)
4.	Deviation in Rectangularity	± 0.5%	± 0.1%	± 0.1%	ISO 10545:2/IS:13630 (P-1)
5.	Deviation in Surface Flatness	± 0.5%	± 0.5%	± 0.2%	ISO 10545:2/IS:13630 (P-1)
6.	Surface Quality (%)	Minimum 95%	Minimum 95%	No visible defects	ISO 10545:2/IS:13630 (P-1)
Physical characteristics					
7.	Scratch Hardness of surface Moh's scale	Required	Min. 5	Min. 5	EN-101/IS:13630 (P-13)
8.	Water absorption	≤0.5%	Averages 0.08, Individual maximum, 0.1%	≤0.05%	ISO 10545:3/IS: 13630 (P-2)
9.	Moisture Expansion	Nil	0.02 Max	Nil	ISO 10545:10
10.	Deep Abrasion	max 175 mm ³	max 140 mm ³	≤140 mm ³	ISO 10545:6/IS:13630 (P-12)
Mechanical characteristics					
11.	Breaking strength	1300 N	Min 1300	≥ 200N	ISO 10545:4/IS: 13630 (P-6)
12.	Modulus of rupture	≥ 35 N/mm ²	Average 35, Individual minimum 32	≥ 35 N/mm ²	ISO 10545:4/IS: 13630 (P-6)
Safety characteristics					
Density					
13.	Density	Required	Min 2.20 gm/cc	2.34 gm/cc	DIN 51082/IS: 13630 (P-2)
14.	Skid resistance (Friction coefficient)	≥ 0.4	-	≥ 0.4	ISO 10545:17
Thermo photo characteristics					
15.	Thermal shock resistance	Resistant to 10 cycles	Min 10 cycles	Pass min 10 cycles	ISO 10545:9/IS: 13630 (P-5)
16.	Co efficient of thermal expansion	9×10 ⁻⁶ K ⁻¹ Max	6×10 ⁻⁶ K ⁻¹ Max	<6×10 ⁻⁶ K ⁻¹ Max	ISO 10545:8/IS:13630 (P-4)
17.	Frost resistance	Resistant	Required	Resistant	ISO 10545:12/IS: 13630 (P-10)
18.	Color Resistance to UV light	Resistant	-	Resistant	DIN 51094
Chemical characteristics					
Stain Resistance					
19.	Stain Resistance	Min Class 3	Required	Min conform to class 4	ISO 10545:14
20.	Chemical Resistance HOUSE HOLD CHEMICAL & SWIMMING POOL SALT	min class-UB	Required	Conform to classes-UA	ISO 10545:13/IS:13630 (P-7)
21.	Chemical Resistance LOW CONCENTRATIONS ACID & ALKALIES	min class-ULB	Required	Conform to classes-ULA	ISO 10545:13/IS:13630 (P-7)
22.	Chemical Resistance HIGH CONCENTRATIONS ACID & ALKALIES	min class-UHB	Required	Conform to classes-UHA	ISO 10545:13/IS:13630 (P-7)

PACKING DETAILS

S. No.	Dimensions (mm)	No. of tiles / box	Coverage Area
1.	800x1600	2 Pcs.	2.56 Sq. Mtr.
2.	600x1200	2 Pcs.	1.44 Sq. Mtr.
3.	1000x1000	2 Pcs.	2.00 Sq. Mtr.
4.	800x800	3 Pcs.	1.92 Sq. Mtr.
5.	600x600	4 Pcs.	1.44 Sq. Mtr.
6.	Stone Art 600x600	4 Pcs.	1.44 Sq. Mtr.

* Vitrified tiles have resistance to most of the stains/chemicals but, it is recommended to take due care while laying and for day-to-day maintenance.

Resistance to acids & alkalies (Exception Hydrofluoric Acids & its Compounds)

- Colours in the catalog are as accurate as printing process allows
- Sizes mentioned in the catalog are the nominal sizes only.
- Conforming to ISO requirements, technical specifications for Kajaria tiles are applicable only for 1st quality tiles.
- Please inspect all tiles prior to installation; company will not entertain complaints, once tiles are laid / fixed.
- For better laying, please follow the instructions on the packaging box.

NORTH

CHANDIGARH

SCO- 45-46-47, first floor, sector-17A,
opp. Taj Hotel, Chandigarh-160017
Phone : 0172- 4631419 / 16
Mobile : 9501001163

DEHRADUN

International Trade Tower, 1 Old Survey Road,
Adjoining Rajpur Road,, Near Cross Road Mall
Dehradun - 248001, Uttarakhand
Mobile : 97600 40499

JAIPUR

First Floor, Nidhi Kamal Tower, Plot No 37-38 B,
Barwara House, Ajmer Road,Jaipur - 302006, Rajasthan
Phone : 0141-3568640
Mobile : 99290 22124

LUDHIANA

Upper Ground Floor, Sandhu Tower-2,
Gurdev Nagar, Ferozpur Road, Ludhiana - 141001, Punjab
Phone : +91-161-4062909
Mobile : 9779021257

LUCKNOW

529 GHA/06, Kanchana Bihari Marg,
Near Jagrani Hospital, Ring Road
Lucknow - 226016 (U.P.)
Mobile : 9793299660, 8128243886

EAST

KOLKATA (Regional office)

Tirupati Plaza, 2nd Floor, 74/2, A.J.C.Bose Road,
Opp to Jora Girja,
Kolkata - 700 016 (West Bengal)
Mobile: 9007011023

PATNA (Regional office)

'ANCHAL', House No - 15, Ground Floor
Justice Narayan Path, Nageswar Colony,
Patna - 800001, Bihar
Mobile: 7781005449

WEST

MUMBAI

B1-307, BOOMERANG, Chandivali Farm Road,
Near Chandivali Studio, Off Saki-Vihar Road,
Andheri (E) Mumbai - 400072, (Maharashtra)
Mobile : 9987753947,9987753948

PUNE

601-A, D.S.K. Gandharv Heights,
Ganesh Khind Road, Shivaji Nagar,
Pune - 411005, (Maharashtra)
Mobile : 9730081546

AHMEDABAD (Regional office)

Office No. 504, City Centre-2, 5th Floor,
Nr. Sukan Mall Cross Road,
Science City Road, Sola, Ahmedabad -380060
Mobile : 9724340890

CENTRAL

RAIPUR

1st Floor, Maharaja Plaza, Near Wholesale
Fruit Market, Dhamtari Road, Laalpur
Raipur-492001, Chhattisgarh
Mobile : 9755007408

INDORE (Regional office)

S.A. Tower, 1st Floor, 13/3 New Palasia,
Opp. Arya Samaj Building, Indore, 452001
Mobile: 9752593468

SOUTH

BANGALORE

Farah Icon, 119 First Floor
Opp. New Pass Port Kendra, Lalbagh Road,
Bangalore - 560 027, (Karnataka)
Mobile : 900840 2940, 900840 2922
9008957861

CHENNAI

No.162, Metro Plazo, Anna Salai,
Opp. Spencer Plaza Mall, Chennai - 600 002
Ph: 044-4858 4990 / 4858 4991
Mob: 90030 77099, 9840098877

COCHIN

MN Square, 1st Floor
549/2, Near Gold Souk Grande
NH Bypass, Vyttila, Cochin- 19, (Kerala)
Mobile : 9746474732, 9746474733

COIMBATORE

First Floor , No.57, Cowley Brown Road,
R.S Puram, Coimbatore - 641002, (Tamil Nadu)
Mobile : 9003325075

HYDERABAD

Keerthi & Pride Towers, House No. 8-2-120/86/1&2,
3rd Floor, plot No.11 & 12, Road No.2, Banjara Hills
Hyderabad-500034, (Telangana)
Mobile : 9000005385

SALES REPRESENTATIVE

NORTH

AGRA :

Mobile : 9760045574

ALLAHABAD :

Mobile : 9773983600

BHATINDA :

Mobile : 9501001162

DELHI / FARIDABAD / GURGAON :

Mobile : 9717795123

GORAKHPUR :

Mobile : 8009407878

HALDWANI :

Mobile : 9760098112

JALANDHAR :

Mobile : 9779021261

JAMMU :

Mobile : 9906909300

JODHPUR :

Mobile : 9001094759

KANPUR :

Mobile : 9773983602

GHAZIABAD/ NOIDA :

Mobile : 9810010240

ROHTAK / HISSAR / REWARI :

Mobile : 9717795118

SHIMLA

Mobile : 9501001163

UDAIPUR :

Mobile : 9001092597

VARANASI :

Mobile : 9794865554

EAST

BIHAR :

Mobile : 7781005449

JHARKHAND :

Mobile : 9938234060

WB/NE

Mobile : 9007372220

ODISHA

Mobile : 9937571222

SOUTH

CALICUT:

Mobile : 9746117422

KANNUR :

Mobile : 9746474736

HUBLI :

Mobile : 9008278672

MADURAI :

Mobile : 9843731240

MANGALORE :

Mobile : 9008402944

SALEM :

Mobile : 9003842142

TRIVANDURM :

Mobile : 9746474735

TRICHY :

Mobile : 9840284411

THRISSUR :

Mobile : 9746474734

VIJAYAWADA :

Mobile : 9000302776

VISAKHAPATNAM :

Mobile : 9000005387

TIRUPATI :

Mobile : 9701451286

WEST

AURANGABAD :

Mobile : 8600992618

KOLHAPUR :

Mobile : 8600992617

NASIK :

Mobile : 9730081553

NAGPUR :

Mobile : 7755904583

GOA :

Mobile : 7757032203

SURAT :

Mobile : 9724340890

BARODA :

Mobile : 9205897978

CENTRAL

BILASPUR :

Mobile : 9752598469

JABALPUR :

Mobile : 9752593831

GWALIOR :

Mobile : 9752593834

BHOPAL :

Mobile : 9826812147

Kajaria

INDIA'S NO. 1 TILE COMPANY

Kajaria Ceramics Limited

Corporate Office: J1/B1 (Extn.), Mohan Co - op Industrial Estate, Mathura Road, New Delhi - 110044, Ph.: +91-11-26946409

Regd Office: SF-11, Second Floor, JMD Regent Plaza, Mehrauli Gurgaon Road, Village Sikanderpur Ghosi, Gurgaon-122001, Haryana, Ph.:+91-0124-4081281

CIN No. : L26924HR1985PLC056150, E-mail: info@kajariaceramics.com, Web.: www.kajariaceramics.com

 facebook.com/KajariaCeramicsLimited  twitter.com/KajariaCeramic, Tollfree : 1800-309-309

Download Kajaria App  

JANUARY, 2023